

SOOT REMOVER

Unburned Carbon Slag Deposits Remover

Technical Information

Physical Data

Appearance:	Greyish powder
Specific gravity:	1.2 – 1.4
Corrosion action:	None on ordinary metals

Description

Active blend of mineral-based salts, containing slag modifiers and a carbon oxidation catalyst.

Application

To remove unburned carbon slag deposits from:

- ▶ Boiler furnaces
- ▶ Superheaters
- ▶ Economisers
- ▶ Air heaters
- ▶ Exhaust path/stacks

Advantages

- ▶ Reduces soot and slag deposits by transforming them into dry, powdery ashes that are easily removed.
- ▶ Reduces cold end corrosion by neutralizing sulphuric acid deposits on surfaces where the temperature is lower than the dew point of the exhaust gas.
- ▶ Improves heat transfer and aids soot blowing due to the reduction in deposits.
- ▶ Increases boiler efficiency.
- ▶ Reduces cleaning costs by decreasing maintenance and the frequency of cleaning.
- ▶ No need to shut down the boiler or plant when dosing.
- ▶ Available in an easy-to-use stick form.

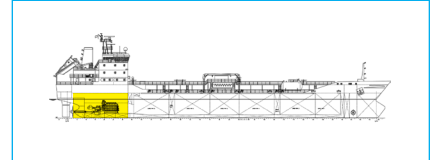
Directions for Use

Determine the quantity of Soot Remover required based on the amount of fuel consumed per boiler per day (see Dosage Table below). Introduce the appropriate amount of Soot Remover into the hottest part of the boiler furnace, pour the contents into the injector, and direct the nozzle towards the hottest area of the flame.

Product Dose

- For oil-fired boilers, the daily dosage depends on the fuel oil consumption per boiler, per day (see table).
- For coal-fired boilers, the approximate daily dosage is 3 kg of Soot Remover per 30 tonnes of coal consumed per boiler every 24 hours.

USAGE AREAS



Fire Side Treatment

PACKAGING



SOOT REMOVER

Unburned Carbon Slag Deposits Remover

Health Safety and Environment (HSE)

Uniservice Unisafe Srl have carefully developed their products to minimize the safety risks and environmental impact of using their products. However, Uniservice advises that, prior to using its products, users should read in detail the accompanying Safety Data Sheet and ensure that its products are applied within the required HSE regulations of the country in which the user operates. Best practice and safety requirements should be followed which will likely include method statements and risk assessments, together with any specific requirements of the user's own company HSE requirements.

Important Notice

While the descriptions, designs, data and information contained herein are presented in good faith and believed to be accurate, this information is provided for your guidance only. Because many factors may affect processing or application/use, we recommend that you do a test to determine the suitability of a product for your particular purpose prior to use. No warranties of any kind, either expressed or implied, including warranties of merchantability or fitness for a particular purpose, are made regarding products described or designs, data or information set forth, or that the products, designs, data or information may be used without infringing the intellectual property rights of others. In no case shall the descriptions, information, data or designs provided be considered a part of our terms and conditions of sale. Further, you expressly understand and agree that the descriptions, designs, data and information furnished by Uniservice Unisafe Srl hereunder are given gratis, and Uniservice Unisafe Srl assumes no obligation or liability for the description, designs, data and information given or results obtained, all such being given and accepted at your risk. Product images are for reference purposes only.

Contact


For further information, please contact your local Uniservice Unisafe sales representative or get in touch with us:

Uniservice Unisafe SRL

Marine Chemicals Division

 Via al S.N.S. della Guardia 58a

Genoa 16162 Italy

 (+39) 010 711 395

 (+39) 010 713 120

 www.uniservicemarine.com