

FOT CATALYST

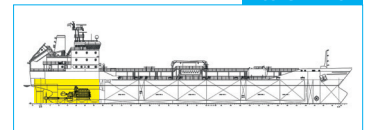
**Fuel Oil Treatment Acting as Combustion Improver, Carbon Catalyst, Ash Modifier
for Diesel Engines and Boilers**

Technical Information

PHYSICAL DATA

Appearance:	Clear reddish-brown liquid
Specific gravity:	0,90 at 20°C.
Flash Point:	More than 70° C (158° F)
Corrosion action:	Metal: None - Rubber: Slight swelling

USAGE AREAS



DESCRIPTION

The latest development of a fuel oil treatment acting as a combustion improver, carbon catalyst, ash modifier and smoke suppressant for diesel engines and boilers.

PROPRIETIES

Dark-brown liquid containing special solvents, emulsion breakers, antioxidants anti-corrosive agents, combustion catalysts, inhibitors, dispersants and ash modifiers. It is easily soluble in all types of fuel.

ADVANTAGES

- Prevents formation of sludge in tanks, filters, preheaters, etc.
- Disperses existing sludge.
- Separates emulsified water and helps water separation at the separator.
- Improves atomisation and combustion.
- Allows reduction of excess air.
- Reduces unburnt particles and soot emissions.
- Limits fouling of combustion chambers, superheaters, exhaust valves, scavenge ports, turbochargers.
- Prevents high and low temperature corrosion by raising the melting point of the Vanadium compound.

PRODUCT DOSE

Dosage point location varies depending on engine/boiler fuel system layout. The most efficient and economical method is obtained with a metering pump, dosing the additive into the suction side of the booster pump (for diesel engines) or into the burner feed line (for boilers). Alternatively the additive may be dosed directly to the day tank prior to refilling or directly to the bunker tanks. Dosage rates are depending upon engine characteristics, operating conditions and quality of fuel oil. A CCAI (Calculated Carbon Aromaticity Index) number exceeding 840 indicates a poor fuel quality which justifies the use of a chemical fuel oil treatment to counteract the effects hereof. Typical dosage rate varies between 1:1000, 1:6000 and 1:12000. Consult your local Uniservice Unisafe Engineer for recommendations of the dosage rate based on specific problems and requirements onboard.

FOT CATALYST

IMPORTANT NOTICE

While the descriptions, designs, data and information contained herein are presented in good faith and believed to be accurate, this information is provided for your guidance only. Because many factors may affect processing or application/use, we recommend that you do a test to determine the suitability of a product for your particular purpose prior to use. No warranties of any kind, either expressed or implied, including warranties of merchantability or fitness for a particular purpose, are made regarding products described or designs, data or information set forth, or that the products, designs, data or information may be used without infringing the intellectual property rights of others. In no case shall the descriptions, information, data or designs provided be considered a part of our terms and conditions of sale. Further, you expressly understand and agree that the descriptions, designs, data and information furnished by Uniservice Unisafe Srl hereunder are given gratis, and Uniservice Unisafe Srl assumes no obligation or liability for the description, designs, data and information given or results obtained, all such being given and accepted at your risk.