

# CHLOR 16

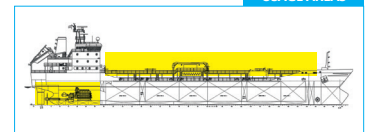
## Potable Water Treatment

### Technical Information

#### PHYSICAL DATA

Form:	liquid
Colour:	Light yellow
Odour:	Chlorine
pH (at 20° C):	13
Flash point	none

#### USAGE AREAS



#### DESCRIPTION

Chlorine is a chemical compound with the formula NaClO. Chlorine solution, commonly known as bleach, is frequently used as a disinfectant or a bleaching agent.

#### ADVANTAGES

Control and removal of bacterial flora ensured thus meeting the essential requirements for drinking water. 12% CHLORINE is universally recognized as a disinfectant for drinking water (approval by the Ministry of Health) therefore its use is allowed in all civil water supply lines.

#### RECOMMENDED DOSAGE

0,2 PPM of RESIDUAL ACTIVE CHLORINE as assessed by DPD method and tablets or ortho-tolidine should always be present in the ship or pipeline farthest point from place of application. Residual chlorine in drinking water tanks should range between 0,5 and 2 (maximum) PPM, to ensure wide range antibacterial protection. To obtain 2 PPM in a drinking water tank, put 20 cc of CHLOR 16 (corresponding to approximately 20 pump strokes of the proportioning pump) for every cubic meter of water.

CHLOR 16 may either be proportioned manually with the proportioning pump or automatically upon water loading by means of a proportioning system featuring a pulse water meter connected with a special proportioning pump. To obtain 20 cc per ton of CHLOR 16 (or 200 cc every 10 tons), a meter must be installed releasing one impulse every 50 ltrs of water flowing inside the pipe. Alternatively, an oversized meter can be used (i.e. every 10 lt.)

In this case the Chlorine solution must be diluted with water or the proportioning pump has to be set to have a pump stroke every 50 litres.

Consult Uniservice Unisafe Service Engineer for Swimming Pool and Jacuzzi pool disinfection.

# CHLOR 16

## MEASURES IN CASE OF ACCIDENTS AND FIRES

Inhalation: fresh air, rest, half upright position and transport to hospital. Skin: remove contaminated clothes, rinse skin with plenty of water or shower and call a doctor, if necessary. Eyes: first rinse with plenty of water, then transport to a doctor. Ingestion: rinse mouth, give plenty of water to drink and transport to hospital immediately.

## PROTECTIVE MEASURES, STORAGE AND HANDLING

Technical protective measures:

- Storage: Do not keep the container sealed. (Keep original closing on drum and be aware of filthiness). Keep container in a well ventilated dark place.
- Handling: Personal protective equipment
- Respiratory protection
- Hand protection: gloves (PVC)
- Eye protection: safety glasses
- Industrial hygiene: keep away from food, drink and animal feeding stuff. Take off immediately all contaminated clothing.

Protection against fire and explosion: In case of fire keep container cool with waterspray Disposal: Waste disposal for chemical waste

## INFORMATION ON TOXICITY

Inhalation: pungent, sore throat, coughing, laboured breathing Skin: redness, pain Eyes: corrosive, redness, pain, blurred vision  
Ingestion: corrosive, sore throat, abdominal spasm, vomiting

## INFORMATION ON ECOLOGICAL EFFECTS

Spilling of the product into the water may cause damage to fishes and water organisms by raising pH and liberation of chlorine.

## IMPORTANT NOTICE

While the descriptions, designs, data and information contained herein are presented in good faith and believed to be accurate, this information is provided for your guidance only. Because many factors may affect processing or application/use, we recommend that you do a test to determine the suitability of a product for your particular purpose prior to use. No warranties of any kind, either expressed or implied, including warranties of merchantability or fitness for a particular purpose, are made regarding products described or designs, data or information set forth, or that the products, designs, data or information may be used without infringing the intellectual property rights of others. In no case shall the descriptions, information, data or designs provided be considered a part of our terms and conditions of sale. Further, you expressly understand and agree that the descriptions, designs, data and information furnished by Uniservice Unisafe Srl hereunder are given gratis, and Uniservice Unisafe Srl assumes no obligation or liability for the description, designs, data and information given or results obtained, all such being given and accepted at your risk.